

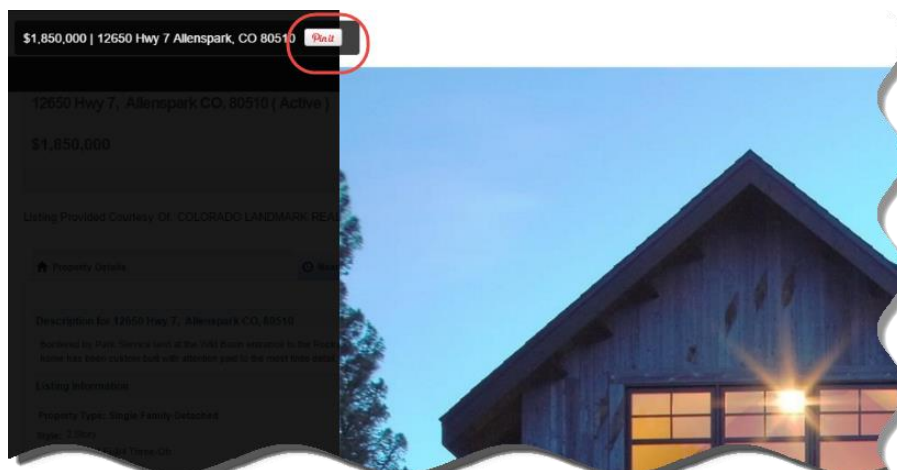
## Matrix Updates

Do you want to share your listings on Social Media sites such as Facebook, LinkedIn, Twitter, or Google+? The Share Listing link will now display the photo of your listing along with a short description from Public Remarks. Here are some things to keep in mind when posting to Social Media sites.

- **Photos:** Matrix uses the 1600 x 1200 photo for Social Media sites. To make sure your photos look great when shared and on other sites such as REcolorado.com, [upload photos](#) that are at least 1600 x 1200 pixels in size. Smaller photos will have padding and may appear too small.
- **Twitter:** Limited to 140 characters max and will only display the link. The primary photo is not included.

**Sharing to Pinterest:** The Share Listing link isn't supported by Pinterest. However, if you'd like to post specific photos from your listing, you have two options:

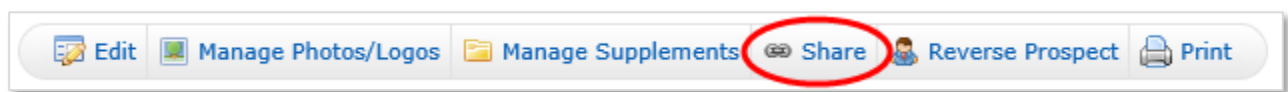
- [REcolorado.com](#) supports pinning photos. Find your listing on REcolorado.com, and when viewing the "Larger Photos", click the Pin It button to pin photos to your board.



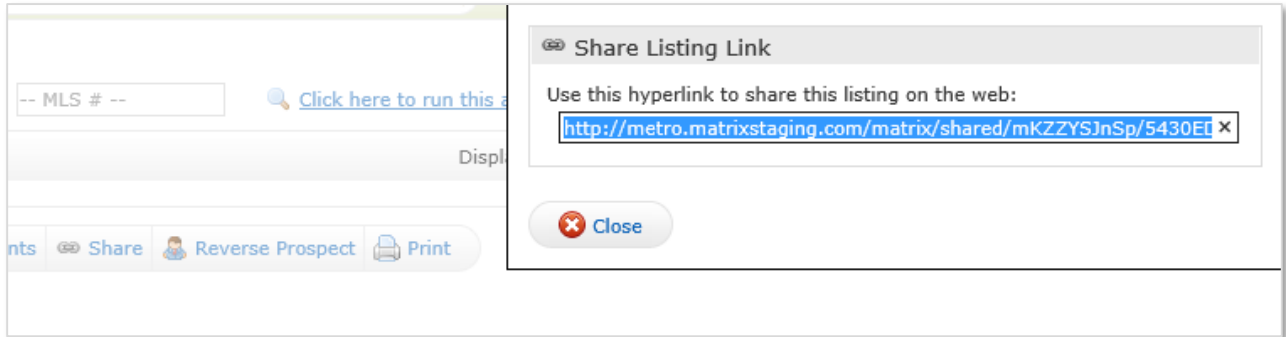
- Alternatively, you could choose to add the [Pinterest Browser Button](#). If you decide to add this to your browser, you will then see the Pinterest Save button on photos in Matrix.

## How to Share Listings on Social Media

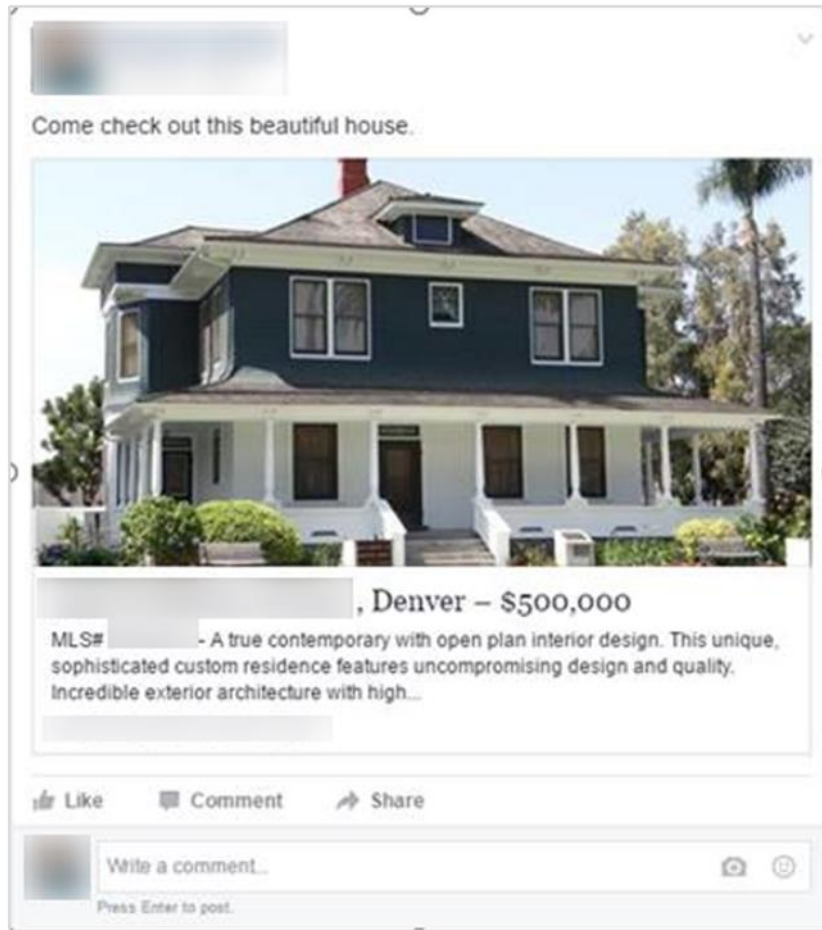
1. Under **My Matrix**, click on **My Listings**.
2. Select a listing and click **Share** at the bottom of the listing.



3. The Share Listing link will appear.
4. Copy this link and paste it into your social media site.  
**Note:** Twitter has recently changed their API which affects the Share Listing functionality. Matrix is working on updating to the new API.



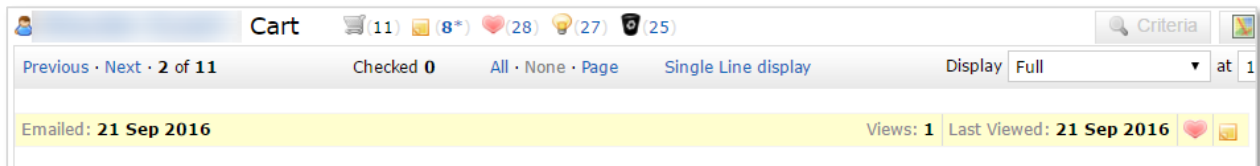
**Facebook:** Example of sharing your listing on Facebook.



### Recent Activity Highlight Bar on the Auto Email, Carts and Client Portal Full Displays

When viewing a listing's Full display from a client's Auto Emails or Carts, the bar highlighting recent activity now appears across property types.

- This bar lets you easily see when the listing was last emailed to your client, how many times your client has viewed the listing and the date they last viewed it.
- In addition, you can view if your client has marked the listing as Favorite, Possibility or Discard.
- The note icon allows you or your clients to add comments or ask questions regarding the listing. New comments will be identified with a star (\*) on the note icon.
- The highlighted bar is now also visible within the Client Portal, letting your client easily view the same information.



### Other Matrix Updates

- On Residential input, CalAtlantic Homes is now available in the Builders list. Ryland Homes and Standard Pacific have been removed from the Builder list in input because they recently merged to form CalAtlantic Homes. All three company names are searchable in Builder Name.
- On Residential Detached, Residential Attached, and Income input, "Mountain Property" is now available in Site Type.